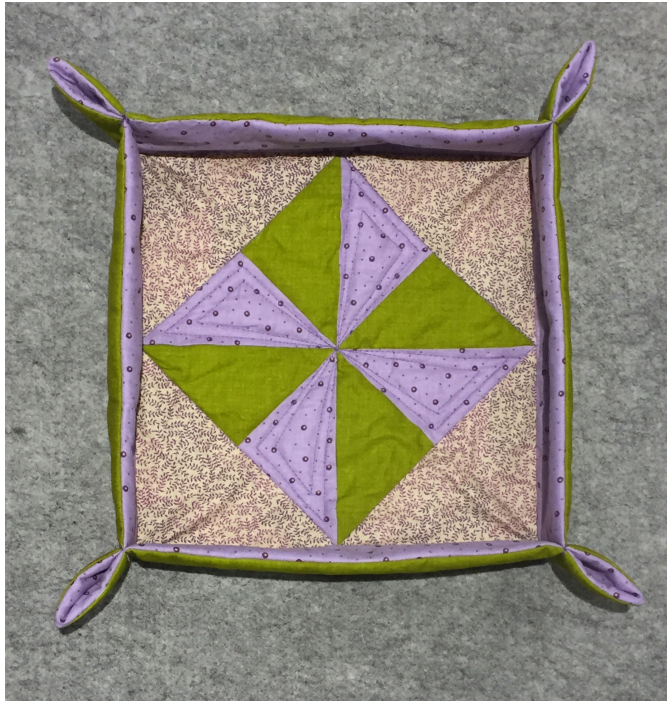


Fabric Tray

© Bev Mayo 2021



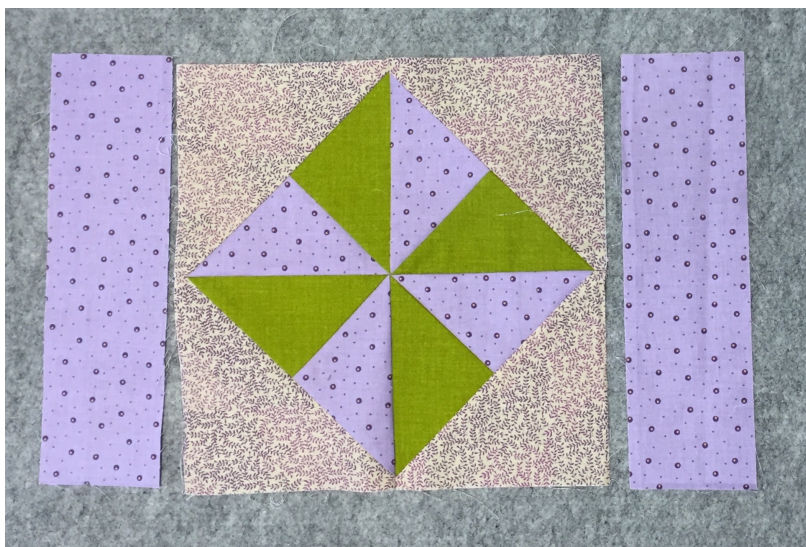
Fabric Requirements

- (1) patchwork block (10½" square)
- (2) 3" x 10½" border fabric
- (2) 3" x 15½" border fabric

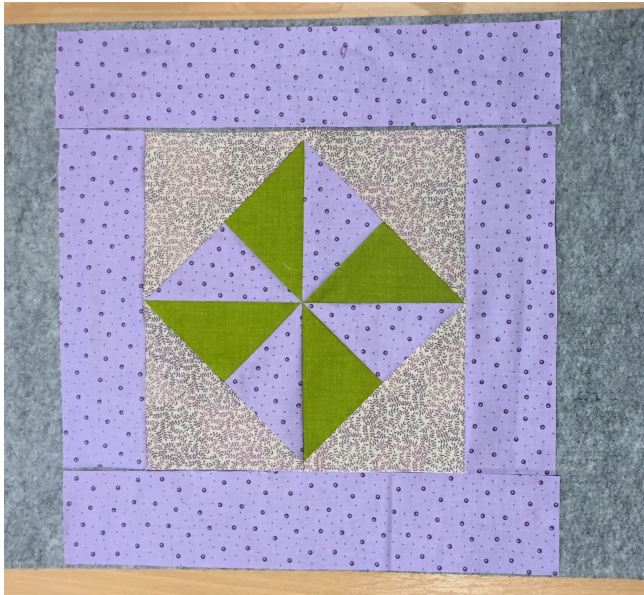
- (1) 15½" square wadding
- (1) 15½" square Stitch & Tear stabilizer
- (1) 15½" square backing fabric

Complimentary thread for quilting

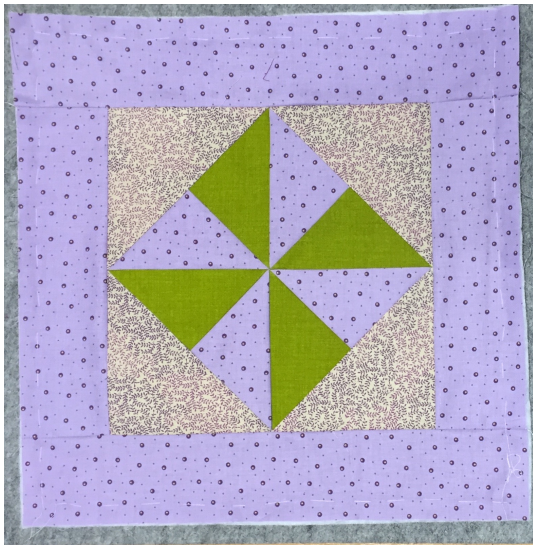
Instructions



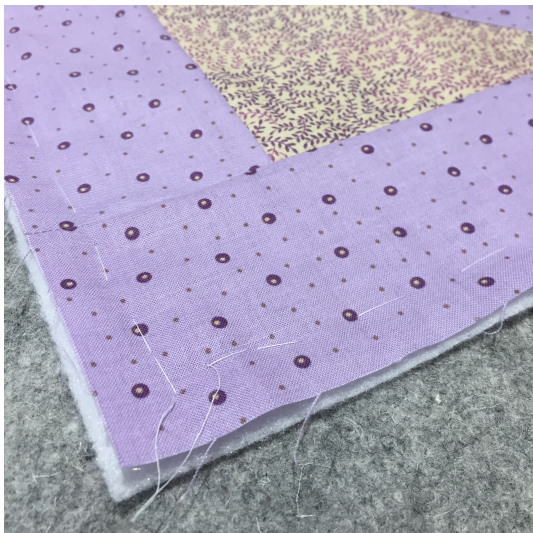
1. Take the 2 short border pieces and place on opposite sides of the patchwork block. Pin and stitch in place. Press open



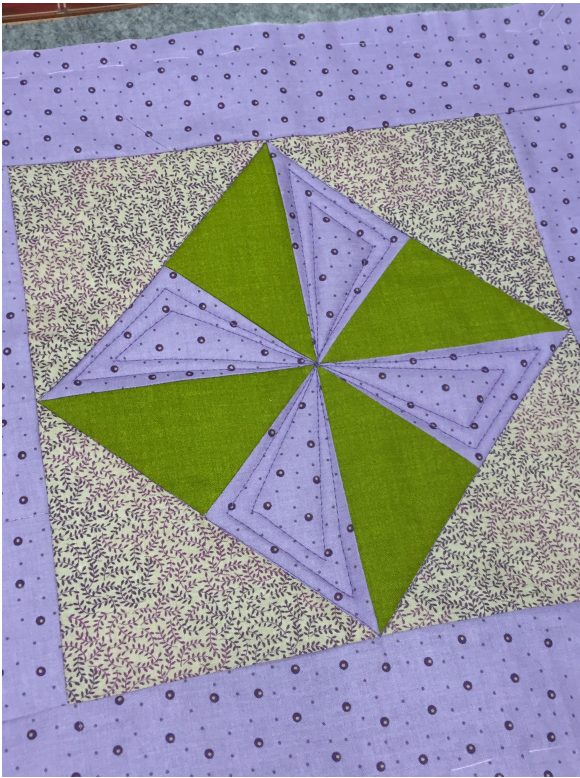
2. Take the 2 long border pieces and place on opposite sides of the patchwork block. Pin and stitch in place. Press open



3. Make a quilt sandwich with the wadding and the Stitch and Tear stabilizer.



Tack (baste) the three layers together.



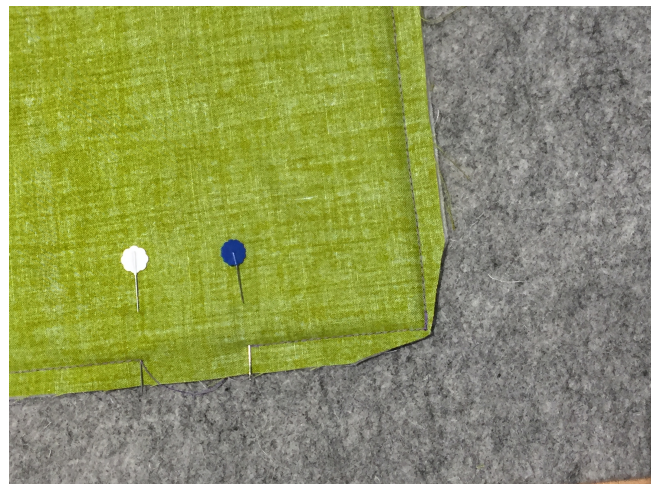
4. Quilt the patchwork block.



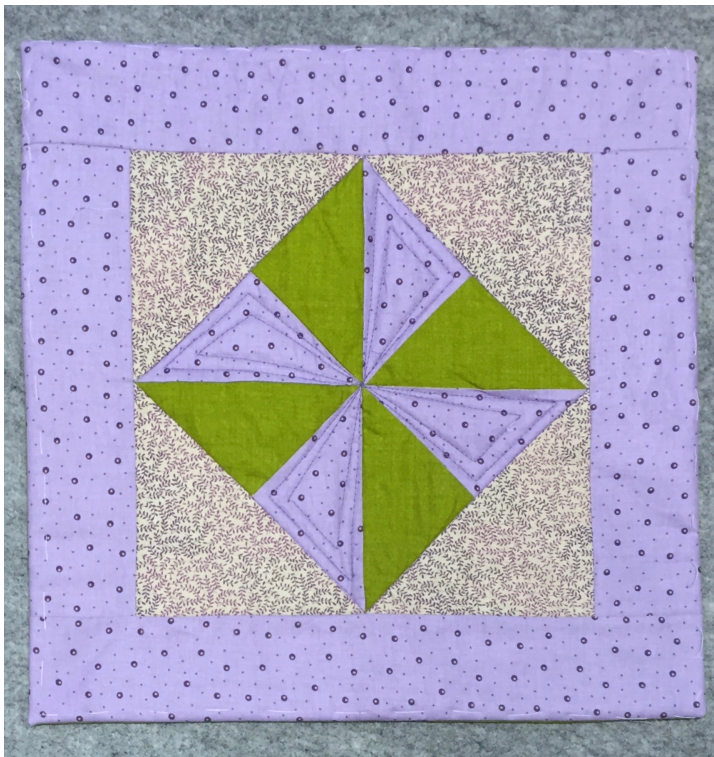
5. Place the backing fabric on top of the quilted block, right side towards the right side of the quilted block. Pin in place.



6. Stitch round the edge of the pinned block, leaving a small gap to turn through.



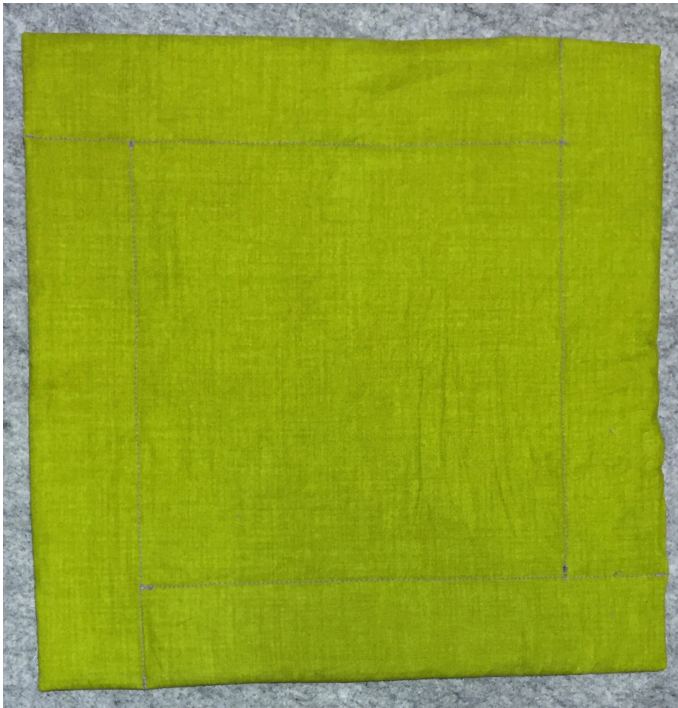
7. Clip the corners. Make sure you don't cut the stitching at the corners.



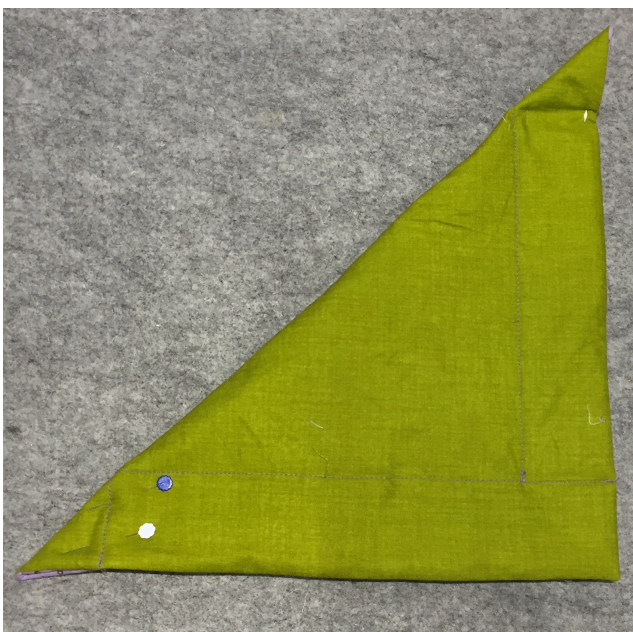
8. Turn through to the right side.

Press.

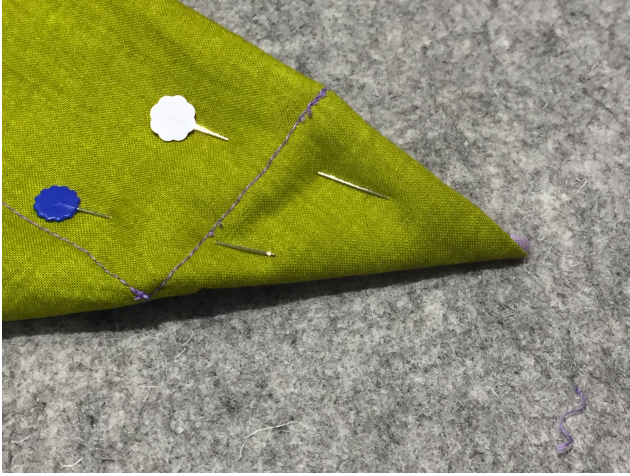
Stitch the gap closed.



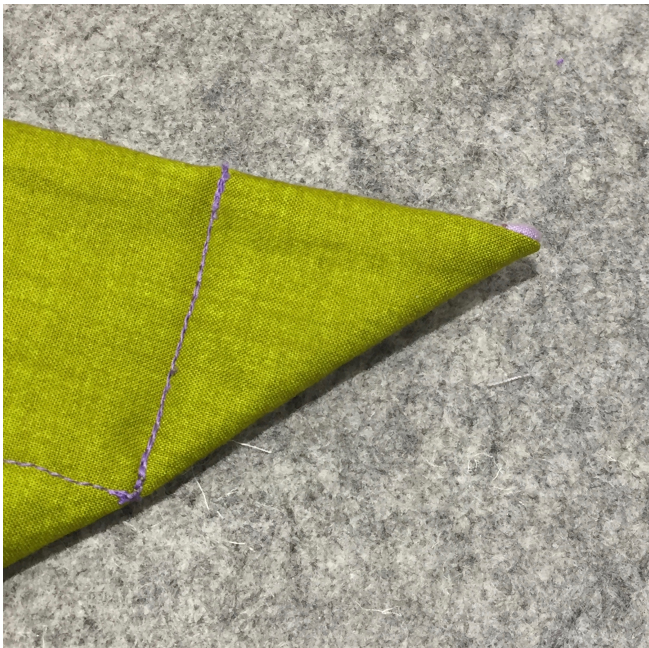
9. Stitch in the ditch along the edge of the borders to the edge of the block on each the four sides.



10. Fold the block in half diagonally as shown.

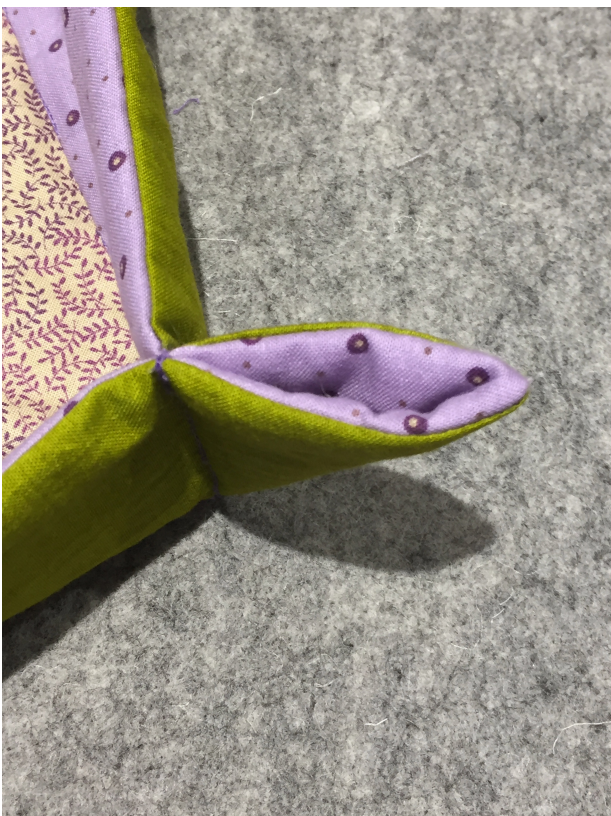


11. Pin the corners



12. Stitch over the border stitching to create the corner.

Repeat on the other side.



13. Fold the panel in half along the other diagonal and repeat for the remaining two corners to complete the tray or basket.

Fabric Tray

© Bev Mayo 2021

